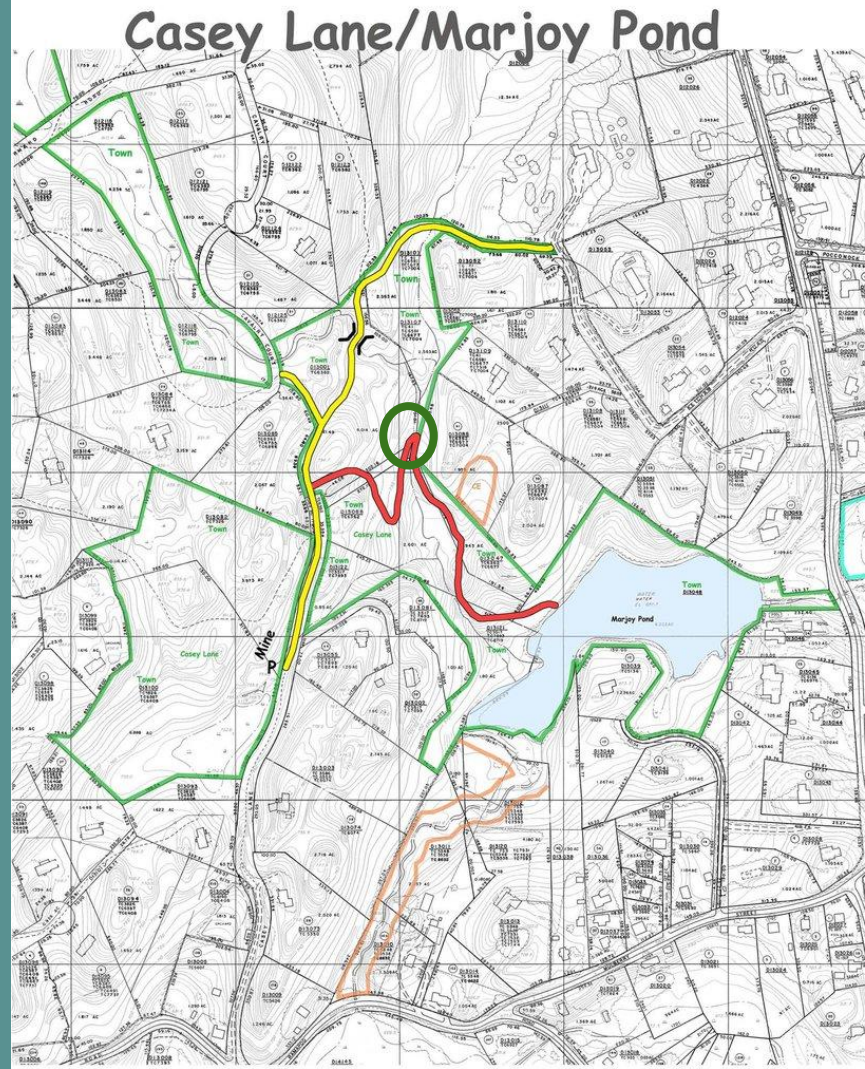


Mar-Joy Pond Eagle Project

By Sophie Desmarais



Description



Description



Purpose



Project details

-When?

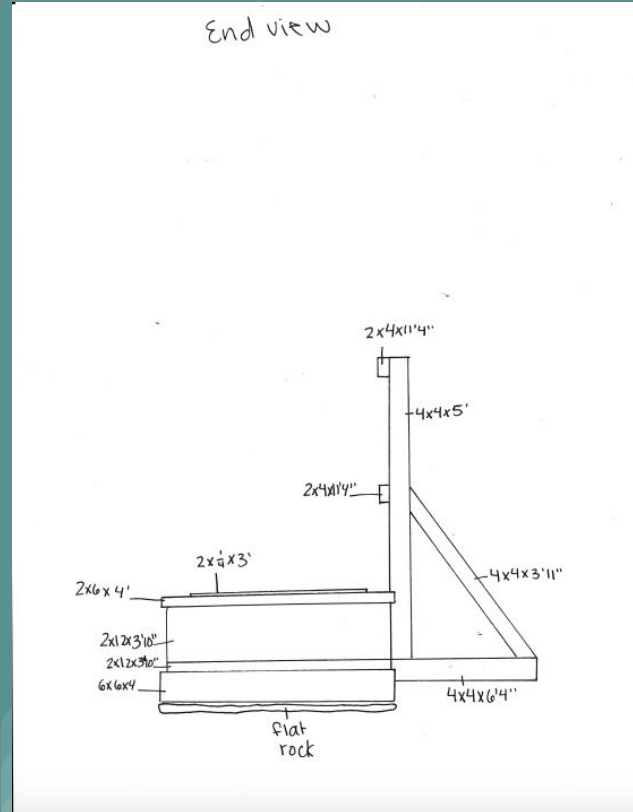
-How many volunteers?



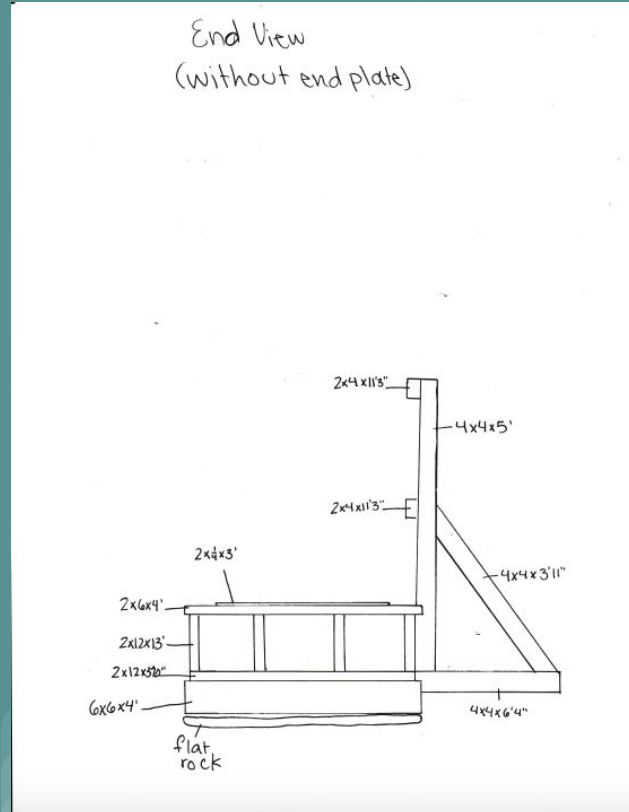
Hand-drawn side view of a wooden structure, likely a bench or low wall. The drawing includes the following dimensions and labels:

- Top horizontal members:** Three sections labeled $2 \times 4 \times 11'4''$.
- Vertical members:** Four vertical posts labeled $2 \times 12 \times 13'$.
- Horizontal rails:**
 - Top rail: $4 \times 4 \times 5'$
 - Middle rail: $4 \times 4 \times 3'11''$
 - Bottom rail: $4 \times 4 \times 6'4''$
- End rails:**
 - Left end: $2 \times 12 \times 5'10''$
 - Right end: $2 \times 12 \times 5'10''$
- Base/Foundation:**
 - Left: $6 \times 6 \times 4'$ on $flat rock$
 - Right: $6 \times 6 \times 4'$ on $flat rock$
- Other labels:**
 - $4 \times 4 \times 5'$ (top rail section)
 - $4 \times 4 \times 3'11''$ (middle rail section)
 - $4 \times 4 \times 6'4''$ (bottom rail section)
 - $2 \times 4 \times 3'$ (small vertical member)
 - $2 \times 6 \times 4'$ (small vertical member)
 - $3'6''$ (dimension between vertical posts)
 - $1'6''$ (dimension between horizontal rails)

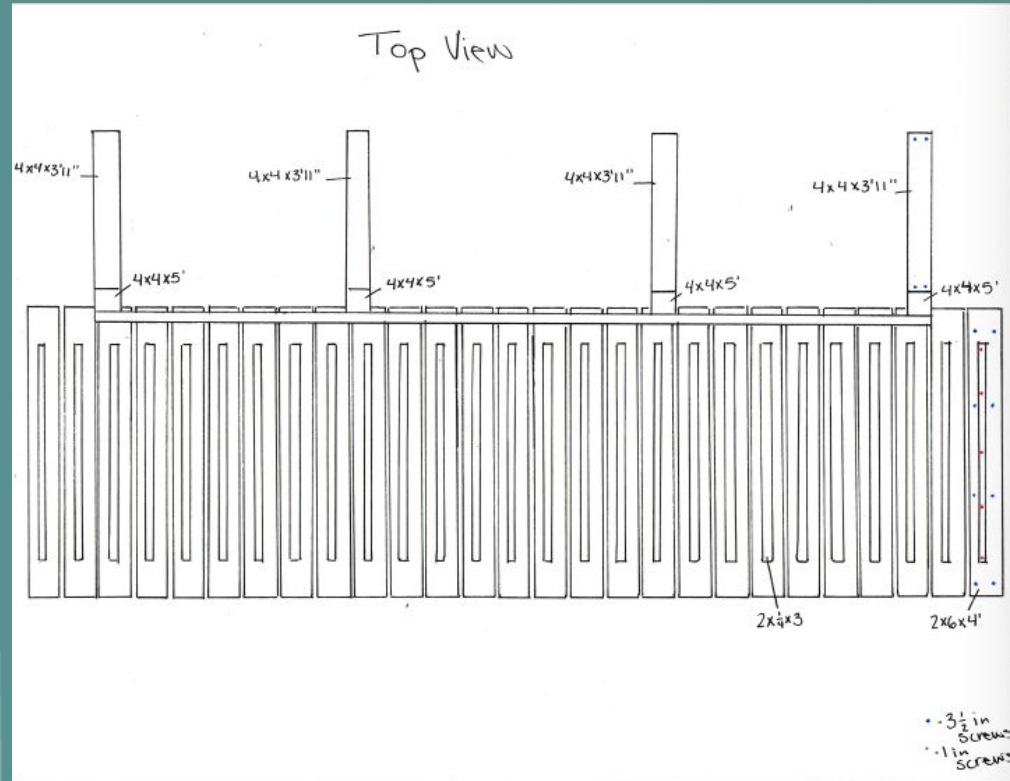
End View



End View (Without End Plate)



Top view



Materials

Here is a link to a detailed materials and cut list:

https://docs.google.com/document/d/1OcIJQ7JAFDiZ4mZI8O-YffDJG1Ssi-DmUfDc_a3AyaY/edit?usp=sharing

Tools

Trail Maintenance:

- loppers
- rakes
- ax
- shovels
- digging bars
- bow saw

Bridge:

- chop saw
- generator
- skill saw
- cordless drill and bits

Cost

Total: \$681.68

Materials: \$611.68

(See Email)

Other: \$70

Food/Water: \$70

Navigating the Eagle Scout Service Project



Thank You and Congratulations

Congratulations on your selection as an Eagle Scout service project beneficiary, and thank you for the opportunity you are making available to an Eagle Scout candidate. Support from community organizations is important to Scouting—just as important as Scouting's contributions are to the community. Scouts provide important services, and benefiting organizations such as yours provides a vehicle for personal growth.

The Eagle Scout Rank and the Service Project

Service to others is an important part of the Scout Oath: "...to help other people at all times." Each year tens of thousands of Scouts strive to achieve the coveted Eagle Scout rank by applying character, citizenship, and Scouting values in their daily lives. One of the rank requirements is to *plan, develop, and give leadership to others in a service project helpful to any religious institution, school, or community*. Through this requirement, Scouts practice what they have learned and gain valuable project management and leadership experience.

Typical Projects

There are thousands of possible Eagle Scout projects. Some involve building things, and others do not. There have been all kinds: making birdhouses for an arboretum, conducting bicycle safety rodeos, constructing park picnic tables or benches, upgrading hiking trails, planting trees, conducting well-planned blood drives, and on and on. Other than the general limitations noted below, there are no specific requirements for project scope or for how many hours are worked, and there is no requirement that a project have lasting value. What is most important is the *impact or benefit* the project will provide to your organization. In choosing a project, remember it must be something a group with perhaps limited skills can accomplish under the leadership of your Eagle Scout candidate. In order to fulfill the requirement, the Scout must be the one to lead the project. Therefore, it is important that you work with the Scout and not with the Scout's parents or leaders.

Project Restrictions and Limitations

- Fundraising is permitted only for facilitating a project. Efforts that primarily collect money, even for worthy charities, are not permitted.
- Routine labor, like a service Scouts may provide as part of their daily lives such as mowing or weeding a church lawn, is not normally appropriate. However, if project scale and impact are sufficient to require planning and leadership, then it may be considered.
- Projects are not to be of a commercial nature or for a business, though some aspects of a business operation provided as a service, such as a community park, may qualify.
- The Scout is not responsible for any maintenance of a project once it is completed.

Approving the Project Proposal and Project Scheduling

Once a potential project is identified, you must approve your Scout's proposal. Regular communications with the Scout can make this quick and easy, but be sure you have both discussed and considered all aspects of the project to ensure your Scout has a clear understanding of your expectations and limitations. Keep in mind the proposal is merely an overview—not a comprehensive project plan.

Some projects may take only a few weeks or months to plan and carry out, while others may take longer. Scouts working toward the Eagle rank are typically busy, so scheduling flexibility may be important. The proposal must also have several approvals, besides yours, before project planning occurs and work begins. Therefore, if a proposed project must be completed by a certain rapidly approaching date, it may be a good idea to consider something different. Remember, too, that all work must be completed before the Scout's 18th birthday.

Approving Project Plans

After the proposal is approved by the BSA local council, your Scout must develop a plan for implementing the project. Before work begins, you should ask to see the plan. It may come in any format you desire or are willing to accept. It could even be a detailed verbal description. That said, the BSA includes a "Project Plan" form in your *Scouts' Eagle Scout Service Project Workbook*, and we recommend that you ask your Scout to use it. If in your plan review you have any concerns the project may run into trouble or not produce the results you want, do not hesitate to require improvements before work begins.

Permits, Permissions, and Authorizations

- If the project requires building permits, etc., your Scout needs to know about them for planning purposes. However, your organization must be responsible for all permitting. This is not a duty for the Scout.
- Your organization must sign any contracts.
- If digging is involved, it is your responsibility to locate, mark, and protect underground utilities as necessary.
- If you need approval from a committee, your organization's management, or a parent organization, etc., be sure to allow additional time and let the Scout know if their help is needed.

Funding the Project

Eagle service projects often require fundraising. Donations of any money, materials, or services must be pre-approved by the BSA unless provided by your organization; by the Scout, the Scout's parents, or relatives; or by the Scout's unit or its chartered organization. The Scout must make it clear to donors or fundraising event participants that the money is being raised on the project beneficiary's behalf, and that the beneficiary will retain any leftover funds. If receipts are needed, your organization must provide them. If your organization is not allowed to retain leftover funds, you should designate a charity to receive them or turn them over to your Scout's unit.

Supervision

To meet the requirement to "give leadership to others," your Scout must be given every opportunity to succeed independently without direct supervision. The Scout's troop must provide adults to assist or keep an eye on things, and your organization should also have someone available. The Scout, however, must provide the leadership necessary for project completion without adult interference.

Safety

Through the proposal and planning process, the Scout will identify potential hazards and risks and outline strategies to prevent and handle injuries or emergencies. Scouts as minors, however, cannot be held responsible for safety. Adults must accept this responsibility. Property owners, for example, are responsible for issues and hazards related to their property or employees and any other individuals or circumstances that would normally be responsible for controlling. If during project execution you have any concerns about health and safety, please share them with the Scout and the unit leaders so action may be taken. If necessary, you may stop work on the project until concerns are resolved.

Project Execution and Approval

After the project has been carried out, your Scout will ask for your approval on their project report. The report will be used in the final review of the Scout's qualifications for the Eagle Scout rank. If the Scout has met your reasonable expectations, you should approve the project; if not, you should ask for corrections. This is not the time, however, to request changes or additions beyond what was originally agreed.

The Eagle Scout service project is an accomplishment a Scout will always remember. Your reward will be a helpful project and, more important, the knowledge you have contributed to a young Scout's growth.

Navigating the Eagle Scout Service Project is also available for download at: <http://www.scouting.org/advancement>



Ridgefield Supply

29 Prospect Street
Ridgefield, CT, 06877
Telephone: 203-438-2626
Fax: 203-438-3817

Quotation

Quote No
Quote Date
Expiration Date

132150
05/29/2020
6/26/2020

Cash Customer
Invoice Address
CT

Delivery Address
CT

Customer CASH
Your Ref WOODCOCK NATURE
Taken By Tom Cicero
Sales Rep HOUSE ACCOUNT

Contact Number SOPHIE DESMARAIS Contact Number 203-450-7237



Page 1 of 2

Special Instructions	Notes
	DESMARAIS - EAGLE SCOUT PROJECT - WOODCOCK NATURE CENT 203-450-7237 sophierosied@gmail.com

Line	Product Code	Description	Qty/Footage	Price	Per	Total
1	PT020412	2X4X12 TREATED SYP #1 2/12	2 ea	8.32	ea	16.64
2		WE DO NOT STOCK 4" X 4 " POSTS IN 14-FT, 16-F NOR 20-FT LENGTHS				
3	PT040408	4X4X8 TREATED SYP #1 6/8	6 ea	13.37	ea	80.22
4	PT040410	4X4X10 TREATED SYP #1 2/10	2 ea	16.71	ea	33.42
5	PT020616	2X6X16 TREATED SYP #1 7/16	7 ea	14.27	ea	99.89
6	PT060608	6X6X8 TREATED SYP #2 1/8	1 ea	27.89	ea	27.89
7	PT021216	2X12X16 TREATED SYP #1 5/16	5 ea	40.40	ea	202.00
8	18219	FASTENMASTER 6" TIMBERLOK SCREW 50pc	1 ea	39.95	ea	39.95
9	17929	SCORPION 3-1/2" XT2 CERAMIC COATED SCREW 200pc	2 ea	26.99	ea	53.98
10	17917	SCORPION 1-1/4" XT CERAMIC COATED SCREW LB	1 ea	9.89	ea	9.89
11	3239918	RUST-OLEUM 12 OZ PAINTERS TOUCH 2X SPRAY PAINT - SATIN COLONIAL RED 249082	1 ea	4.49	ea	4.49

**Ridgefield Supply**

29 Prospect Street
Ridgefield, CT, 06877
Telephone: 203-438-2626
Fax: 203-438-3817

Quotation

Quote No 132150
Quote Date 05/29/2020
Expiration Date 6/26/2020

Cash Customer
Invoice Address
CT

Delivery Address
CT

Customer CASH
Your Ref WOODCOCK NATURE
Taken By Tom Cicero
Sales Rep HOUSE ACCOUNT

Contact Number SOPHIE DESMARAIS **Contact Number** 203-450-7237



Page 2 of 2

Line	Product Code	Description	Qty/Footage	Price	Per	Total
12	PT020608	2X6X8 TREATED SYP #1 1/8	1 ea	6.79	ea	6.79

Total Amount	\$575.16
Sales Tax	\$36.52
Quotation Total	\$611.68

By your signature below, you are agreeing to the Terms and Conditions set forth on back or attached.

Buyer Date

Date

Subject to our terms and conditions of sale. Further copies available on request.

Print Date 05/30/2020

Thank you

