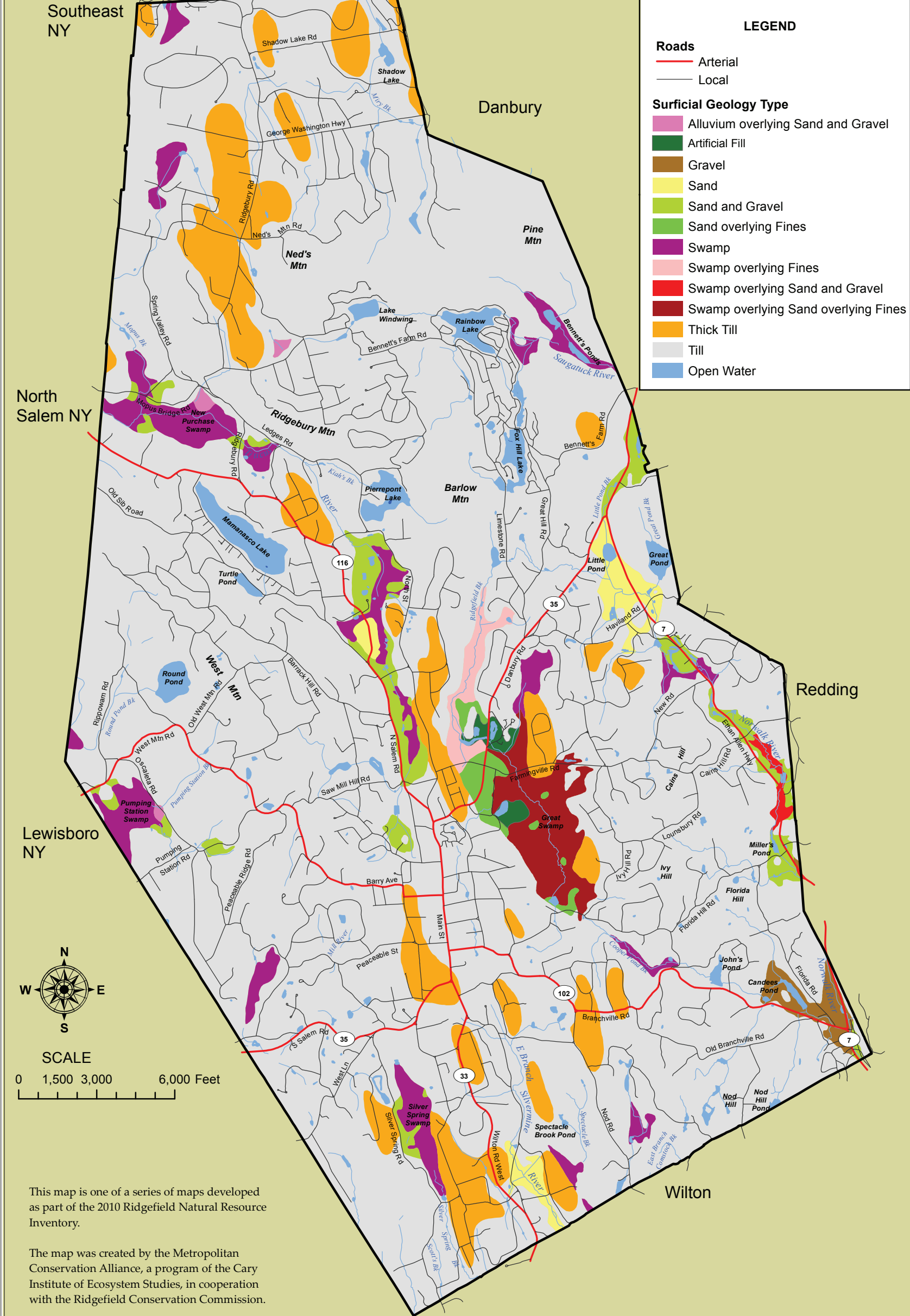


MAP 3: SURFICIAL GEOLOGY



This map is one of a series of maps developed as part of the 2010 Ridgefield Natural Resource Inventory.

The map was created by the Metropolitan Conservation Alliance, a program of the Cary Institute of Ecosystem Studies, in cooperation with the Ridgefield Conservation Commission.

This map is intended to be illustrative and should be used for general planning purposes only.