

MAP 9: VERNAL POOLS

LEGEND

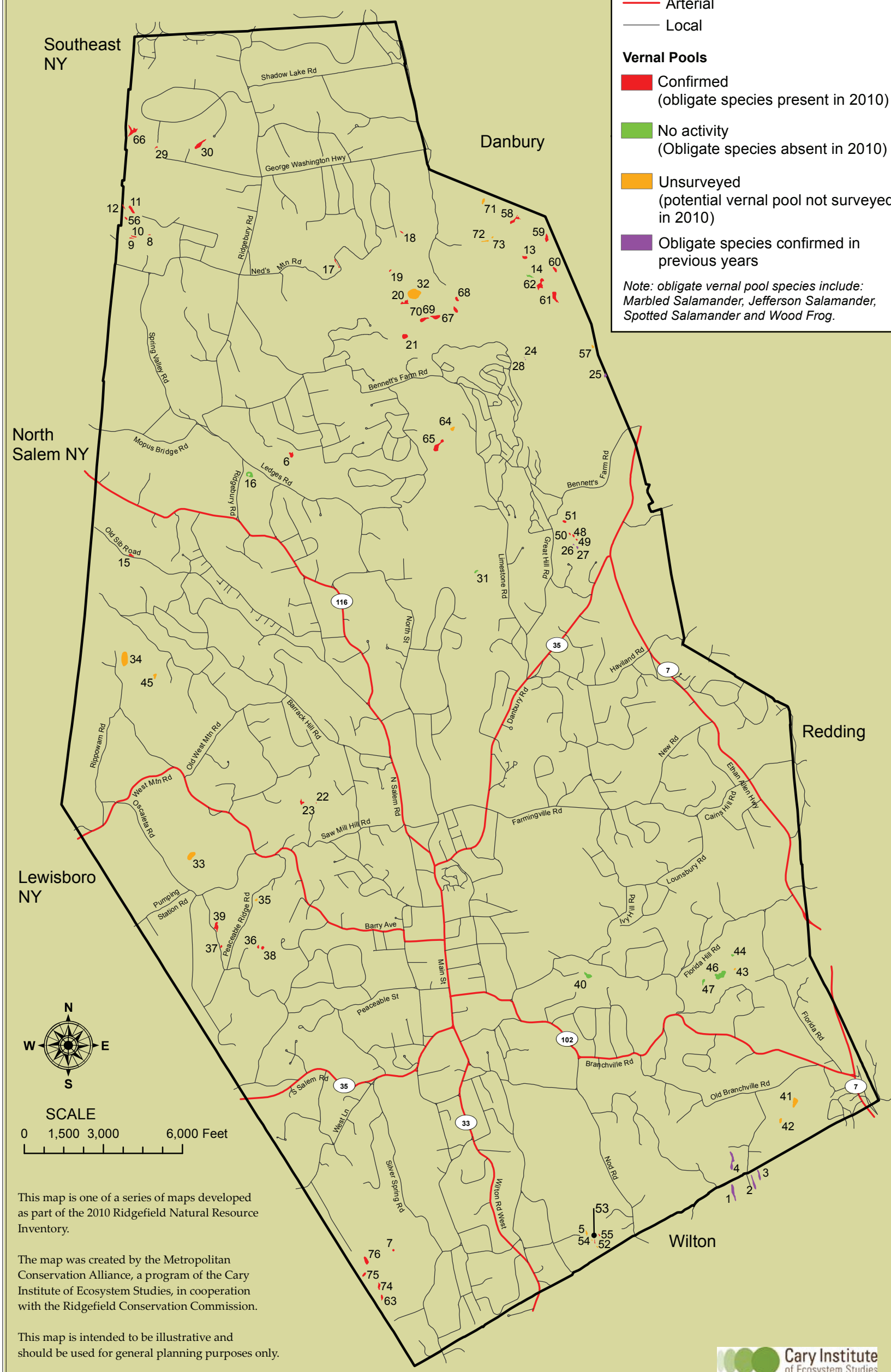
Roads

- Arterial
- Local

Vernal Pools

- Confirmed
(obligate species present in 2010)
- No activity
(Obligate species absent in 2010)
- Unsurveyed
(potential vernal pool not surveyed in 2010)
- Obligate species confirmed in previous years

Note: obligate vernal pool species include: Marbled Salamander, Jefferson Salamander, Spotted Salamander and Wood Frog.



This map is one of a series of maps developed as part of the 2010 Ridgefield Natural Resource Inventory.

The map was created by the Metropolitan Conservation Alliance, a program of the Cary Institute of Ecosystem Studies, in cooperation with the Ridgefield Conservation Commission.

This map is intended to be illustrative and should be used for general planning purposes only.