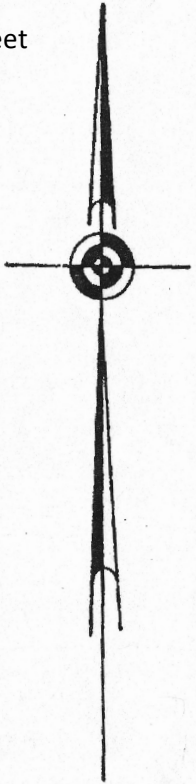
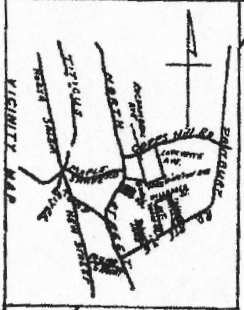
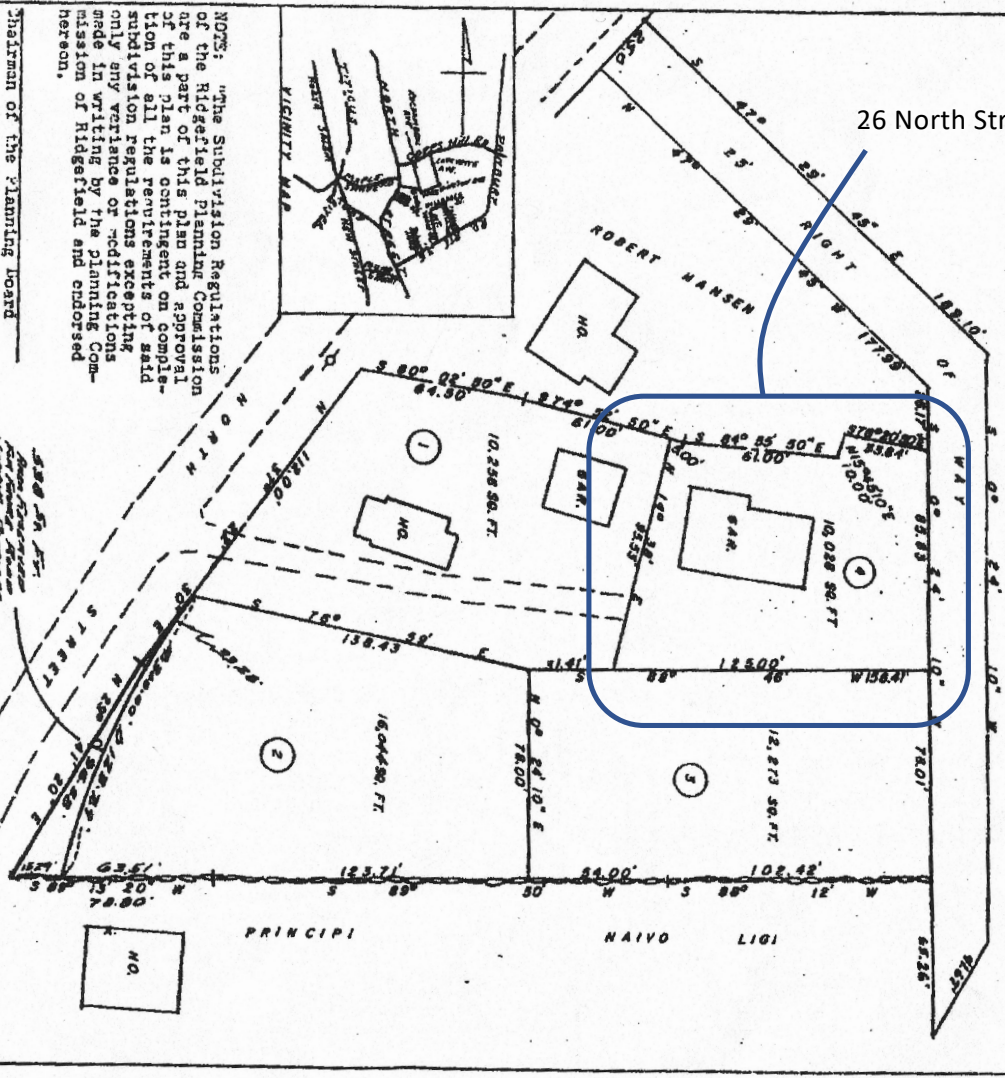


4175



26 North Street



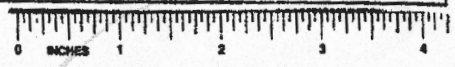
NOTE: "The Subdivision Regulations of the Ridgefield Planning Commission are a part of this plan and approval of this plan is contingent on compliance of all the requirements of said subdivision regulations excepting only any variance or modifications made in writing by the planning Commission of Ridgefield and endorsed hereon."

Chairman of the Planning Board
Town Clerk

PROPERTY OF
PRIMO PRINCIPALI
NORTH STREET
RIDGEFIELD, CONN.
SCALE 1" = 40'
OCT 25, 1965
CERTIFIED SUBSTANTIALLY CORRECT

APPROVED FOR FILING
PLANNING AND ZONING COMMISSION
TOWN OF RIDGEFIELD, CONN.
Shirley M. Weston
9/25/67

Primo Principali
Robert Hansen
Robert Hansen
Robert Hansen
R. L. S.
NEW MILFORD, CONN.
R 2 ZONE
691



Initial proposal

Fence (6'-high, full-privacy, vinyl)

Existing shed

2'

0.2'

Front door

Proposed shed

Shed location compliant with 20' setbacks

Large tree
4'- trunk diameter

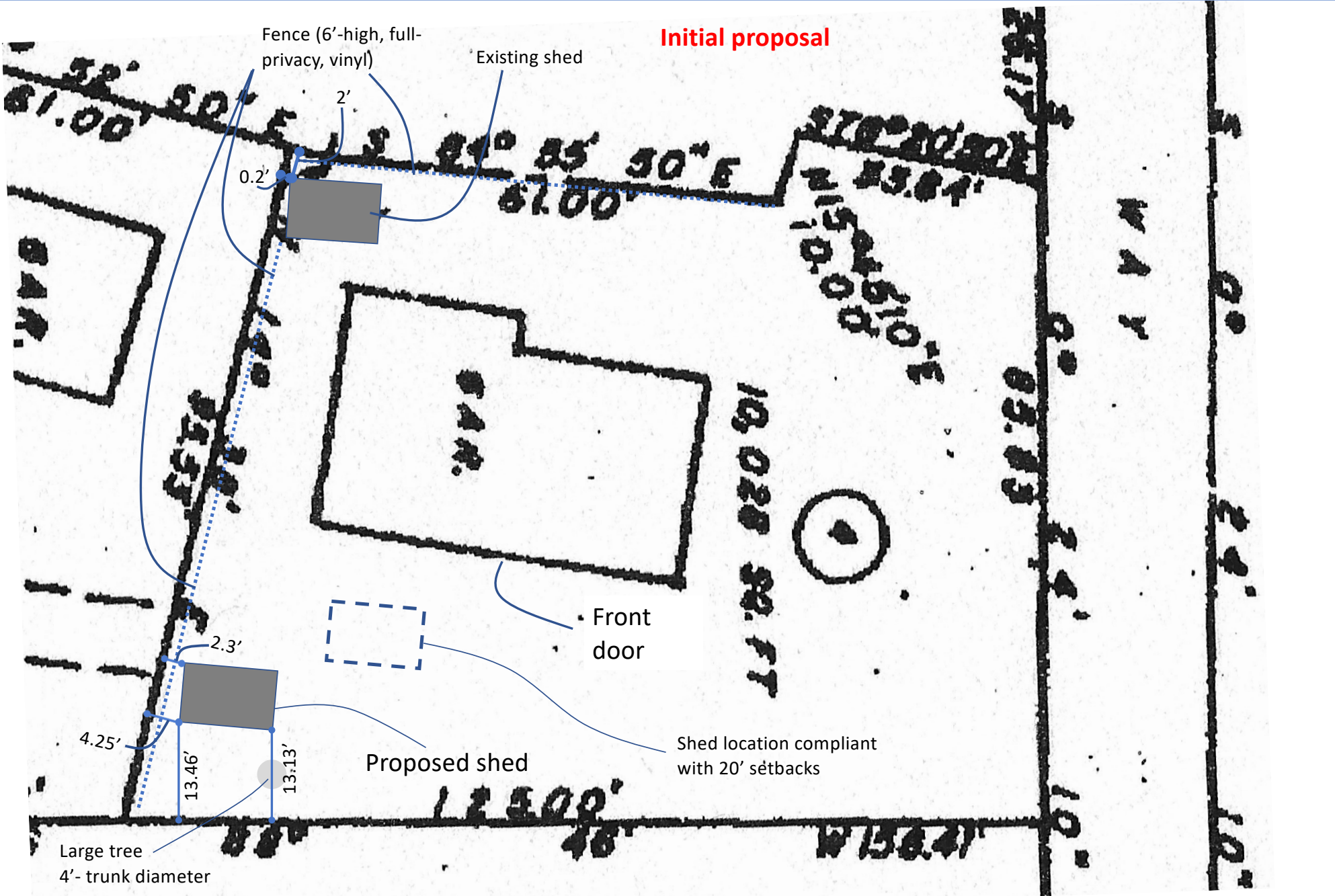
4.25'

13.46'

2.3'

13.13'

18,028 SQ. FT



Revised proposal

Fence (6'-high, full-privacy, vinyl)

Existing shed

0.2'

2'

9.25'

3.5'

~ 41'

~ 42'

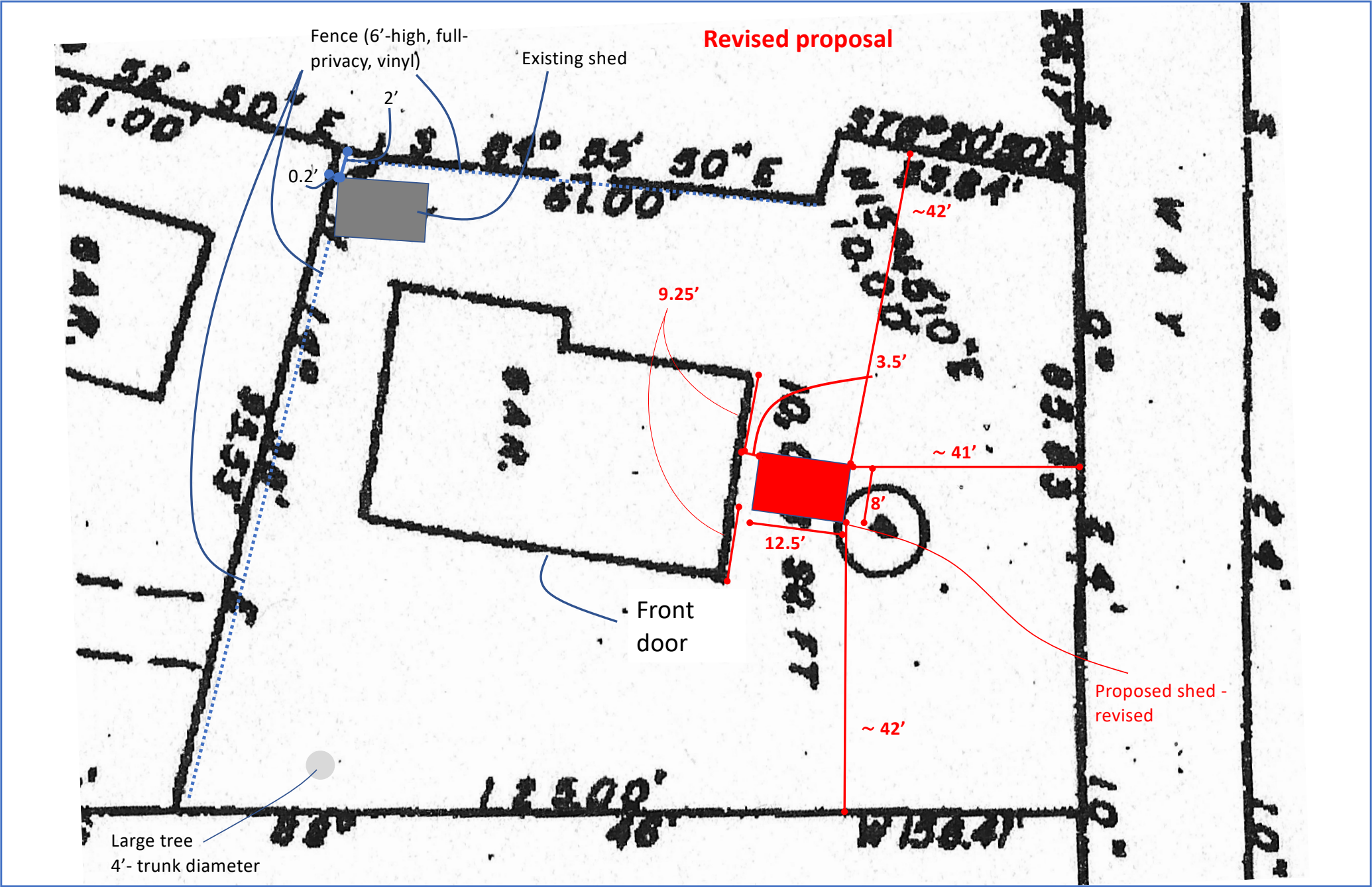
Proposed shed - revised

Front door

12.5'

8'

Large tree
4'- trunk diameter







12.5'

8'

8'