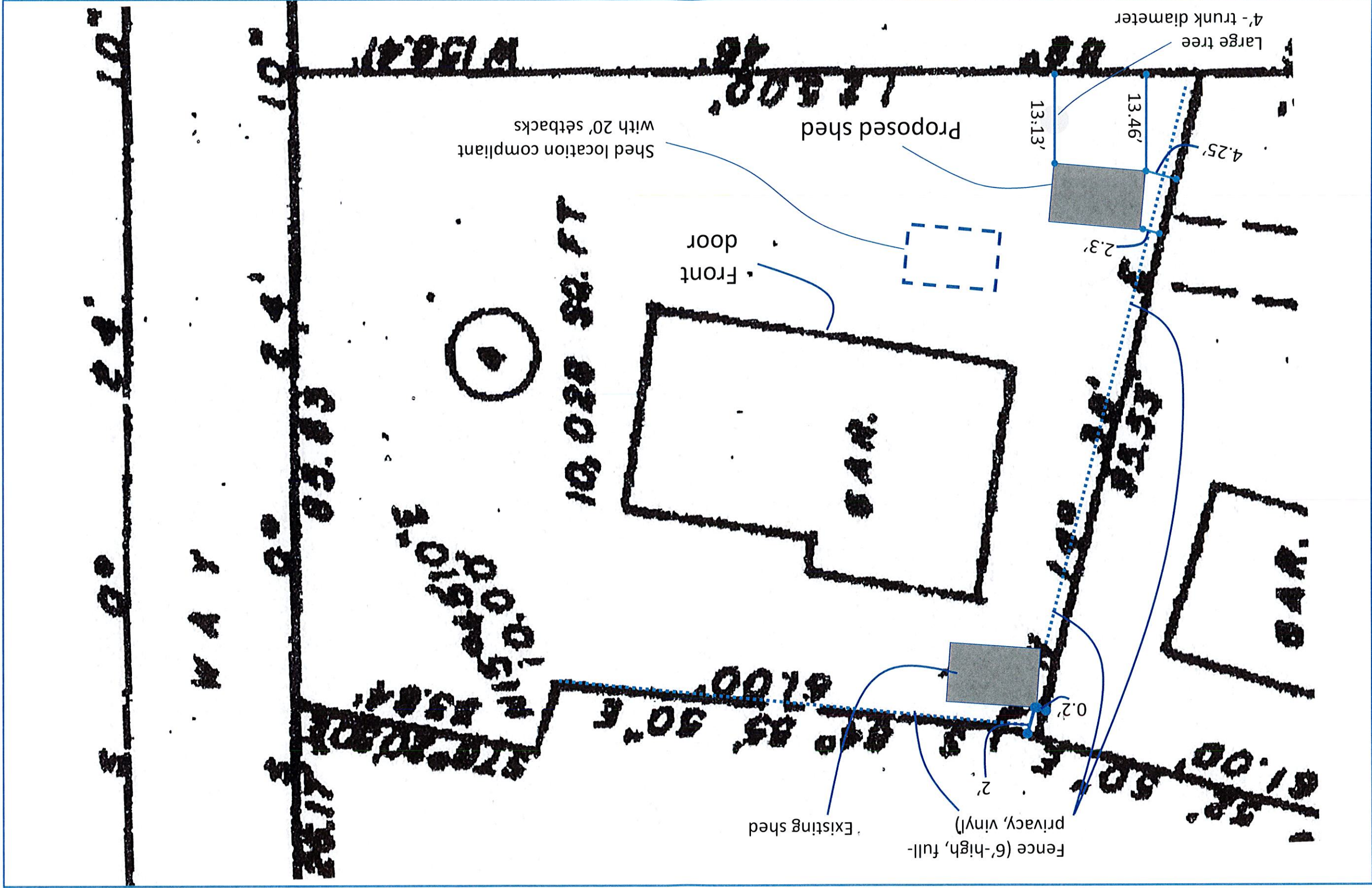


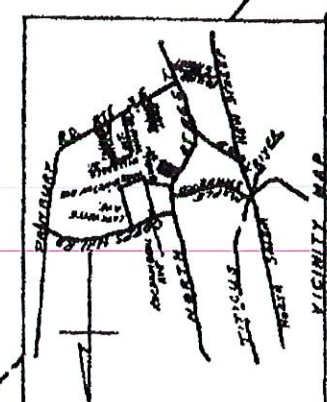
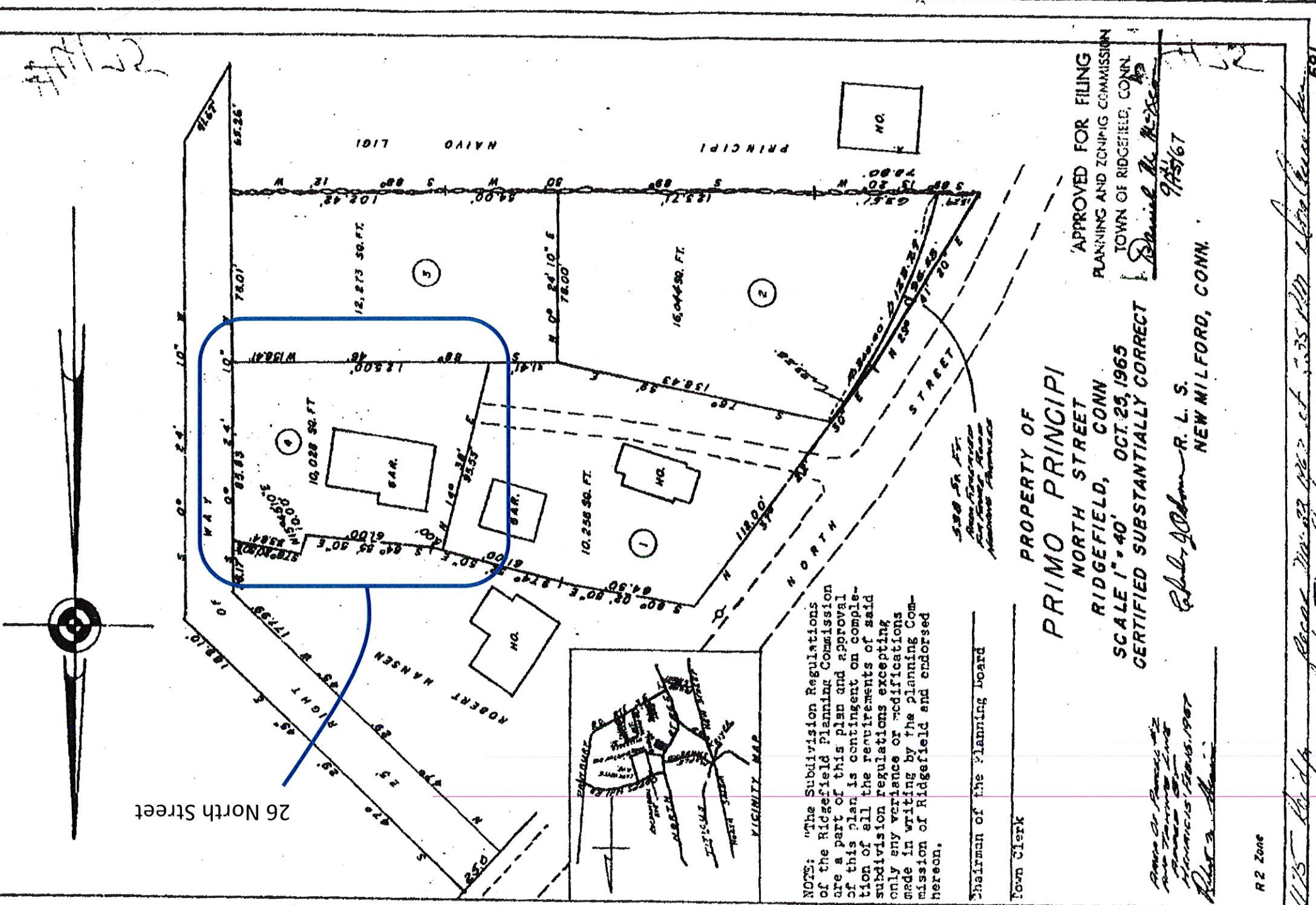
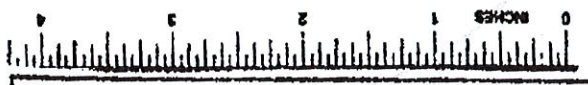
12.5'

8'

8'







NOTES: "The Subdivision Regulations of the Ridgefield Planning Commission are a part of this plan and approval of this plan is contingent on completion of all the requirements of said subdivision regulations excepting only any variance or modifications made in writing by the Planning Commission of Ridgefield and endorsed hereon."

Chairman of the Planning Board

Town Clerk

PROPERTY OF
PRIMO PRINCIPI
NORTH STREET
RIDGEFIELD, CONN.

SCALE 1" = 40' OCT. 23, 1965
CERTIFIED SUBSTANTIALLY CORRECT

APPROVED FOR FILING
PLANNING AND ZONING COMMISSION
TOWN OF RIDGEFIELD, CONN.

Done at Ridgefield, Conn. this 23rd day of October 1965.
R. L. S.

Robert L. S.
R. L. S.
NEW MILFORD, CONN.

R 2 Zone

4175

4175
Ridgefield
East
691