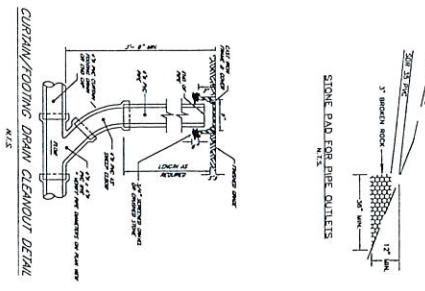


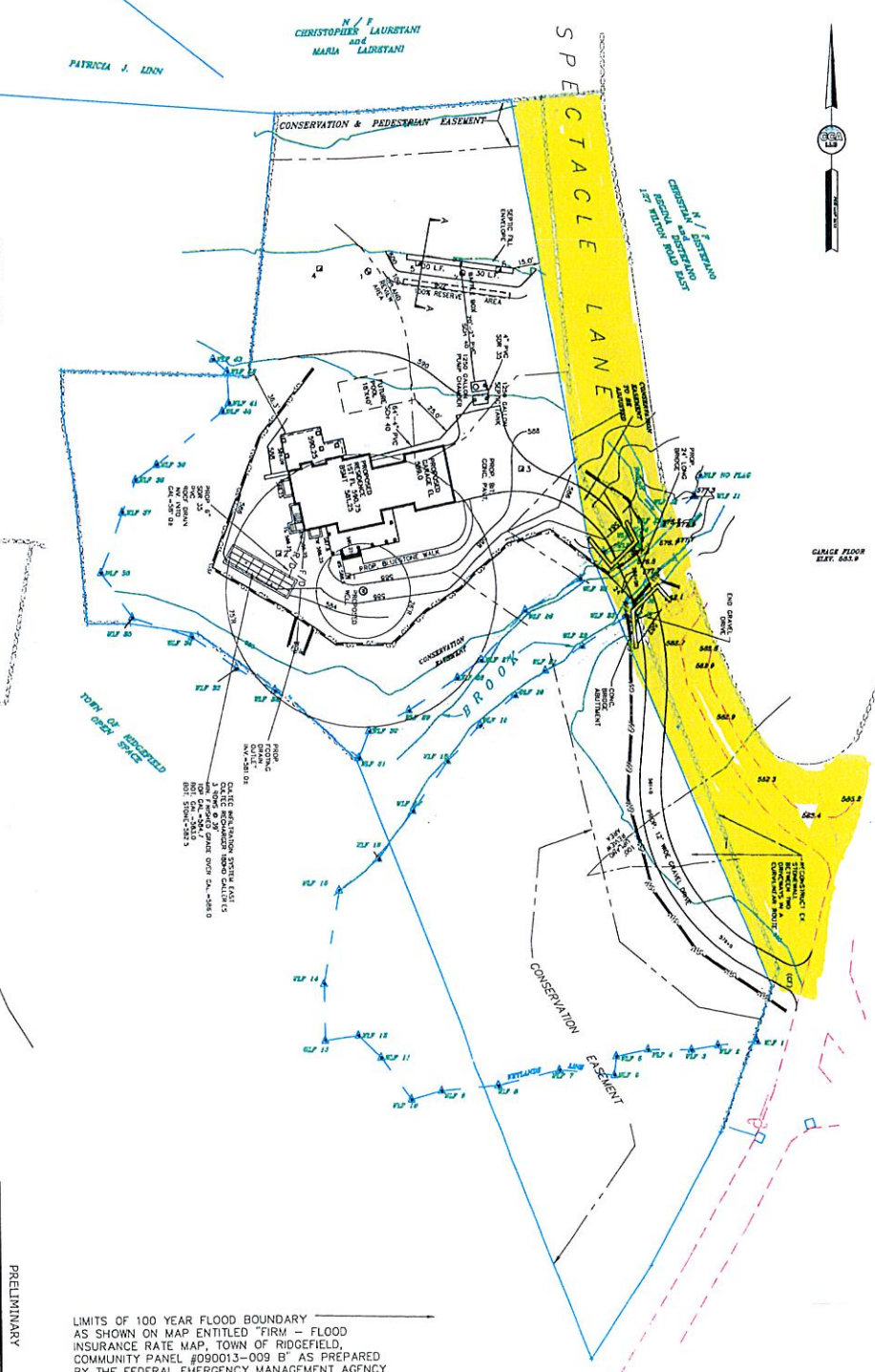
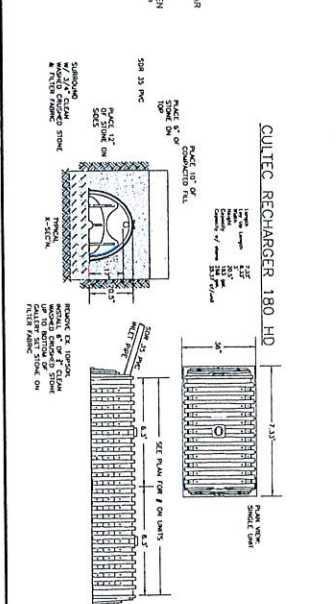
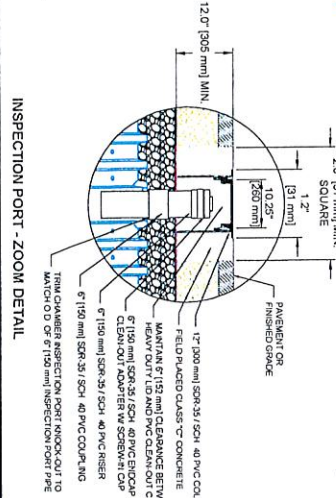
- NOTES:**
1. DATE SHEET AND PREPARED BY AND DRAWING NO. ARE TO BE INDICATED ON ALL SHEETS.
 2. THIS DRAWING IS TO BE USED FOR THE DESIGN AND CONSTRUCTION OF PERCOLATION TESTS.
 3. THE CONTRACTOR IS TO BE RESPONSIBLE FOR OBTAINING ALL NECESSARY PERMITS AND APPROVALS FROM THE TOWN OF RIDGEFIELD.
 4. THE CONTRACTOR IS TO BE RESPONSIBLE FOR OBTAINING ALL NECESSARY PERMITS AND APPROVALS FROM THE TOWN OF RIDGEFIELD.
 5. THE CONTRACTOR IS TO BE RESPONSIBLE FOR OBTAINING ALL NECESSARY PERMITS AND APPROVALS FROM THE TOWN OF RIDGEFIELD.
 6. THE CONTRACTOR IS TO BE RESPONSIBLE FOR OBTAINING ALL NECESSARY PERMITS AND APPROVALS FROM THE TOWN OF RIDGEFIELD.
 7. THE CONTRACTOR IS TO BE RESPONSIBLE FOR OBTAINING ALL NECESSARY PERMITS AND APPROVALS FROM THE TOWN OF RIDGEFIELD.
 8. THE CONTRACTOR IS TO BE RESPONSIBLE FOR OBTAINING ALL NECESSARY PERMITS AND APPROVALS FROM THE TOWN OF RIDGEFIELD.
 9. THE CONTRACTOR IS TO BE RESPONSIBLE FOR OBTAINING ALL NECESSARY PERMITS AND APPROVALS FROM THE TOWN OF RIDGEFIELD.
 10. THE CONTRACTOR IS TO BE RESPONSIBLE FOR OBTAINING ALL NECESSARY PERMITS AND APPROVALS FROM THE TOWN OF RIDGEFIELD.
 11. THE CONTRACTOR IS TO BE RESPONSIBLE FOR OBTAINING ALL NECESSARY PERMITS AND APPROVALS FROM THE TOWN OF RIDGEFIELD.
 12. THE CONTRACTOR IS TO BE RESPONSIBLE FOR OBTAINING ALL NECESSARY PERMITS AND APPROVALS FROM THE TOWN OF RIDGEFIELD.
 13. THE CONTRACTOR IS TO BE RESPONSIBLE FOR OBTAINING ALL NECESSARY PERMITS AND APPROVALS FROM THE TOWN OF RIDGEFIELD.
 14. THE CONTRACTOR IS TO BE RESPONSIBLE FOR OBTAINING ALL NECESSARY PERMITS AND APPROVALS FROM THE TOWN OF RIDGEFIELD.
 15. THE CONTRACTOR IS TO BE RESPONSIBLE FOR OBTAINING ALL NECESSARY PERMITS AND APPROVALS FROM THE TOWN OF RIDGEFIELD.
 16. THE CONTRACTOR IS TO BE RESPONSIBLE FOR OBTAINING ALL NECESSARY PERMITS AND APPROVALS FROM THE TOWN OF RIDGEFIELD.
 17. THE CONTRACTOR IS TO BE RESPONSIBLE FOR OBTAINING ALL NECESSARY PERMITS AND APPROVALS FROM THE TOWN OF RIDGEFIELD.



DEEP HOLE & PERCOLATION TEST RESULTS

TEST DATE: MAY 26, 2022
 TESTER: PATRICIA J. LYNN
 PROJECT: STORMWATER MANAGEMENT PLAN FOR JOE MIRRA-PYRAMID HOMES

TEST NO.	TEST DATE	TESTER	TEST RESULTS
DEEP HOLE 1	5/26/22	PJL	1.0\"/>
DEEP HOLE 2	5/26/22	PJL	1.0\"/>
DEEP HOLE 3	5/26/22	PJL	1.0\"/>
DEEP HOLE 4	5/26/22	PJL	1.0\"/>
DEEP HOLE 5	5/26/22	PJL	1.0\"/>
DEEP HOLE 6	5/26/22	PJL	1.0\"/>
DEEP HOLE 7	5/26/22	PJL	1.0\"/>
DEEP HOLE 8	5/26/22	PJL	1.0\"/>
DEEP HOLE 9	5/26/22	PJL	1.0\"/>
DEEP HOLE 10	5/26/22	PJL	1.0\"/>
DEEP HOLE 11	5/26/22	PJL	1.0\"/>
DEEP HOLE 12	5/26/22	PJL	1.0\"/>
DEEP HOLE 13	5/26/22	PJL	1.0\"/>
DEEP HOLE 14	5/26/22	PJL	1.0\"/>
DEEP HOLE 15	5/26/22	PJL	1.0\"/>
DEEP HOLE 16	5/26/22	PJL	1.0\"/>
DEEP HOLE 17	5/26/22	PJL	1.0\"/>
DEEP HOLE 18	5/26/22	PJL	1.0\"/>
DEEP HOLE 19	5/26/22	PJL	1.0\"/>
DEEP HOLE 20	5/26/22	PJL	1.0\"/>
DEEP HOLE 21	5/26/22	PJL	1.0\"/>
DEEP HOLE 22	5/26/22	PJL	1.0\"/>
DEEP HOLE 23	5/26/22	PJL	1.0\"/>
DEEP HOLE 24	5/26/22	PJL	1.0\"/>
DEEP HOLE 25	5/26/22	PJL	1.0\"/>
DEEP HOLE 26	5/26/22	PJL	1.0\"/>
DEEP HOLE 27	5/26/22	PJL	1.0\"/>
DEEP HOLE 28	5/26/22	PJL	1.0\"/>
DEEP HOLE 29	5/26/22	PJL	1.0\"/>
DEEP HOLE 30	5/26/22	PJL	1.0\"/>
DEEP HOLE 31	5/26/22	PJL	1.0\"/>
DEEP HOLE 32	5/26/22	PJL	1.0\"/>
DEEP HOLE 33	5/26/22	PJL	1.0\"/>
DEEP HOLE 34	5/26/22	PJL	1.0\"/>
DEEP HOLE 35	5/26/22	PJL	1.0\"/>
DEEP HOLE 36	5/26/22	PJL	1.0\"/>
DEEP HOLE 37	5/26/22	PJL	1.0\"/>
DEEP HOLE 38	5/26/22	PJL	1.0\"/>
DEEP HOLE 39	5/26/22	PJL	1.0\"/>
DEEP HOLE 40	5/26/22	PJL	1.0\"/>
DEEP HOLE 41	5/26/22	PJL	1.0\"/>
DEEP HOLE 42	5/26/22	PJL	1.0\"/>
DEEP HOLE 43	5/26/22	PJL	1.0\"/>
DEEP HOLE 44	5/26/22	PJL	1.0\"/>
DEEP HOLE 45	5/26/22	PJL	1.0\"/>
DEEP HOLE 46	5/26/22	PJL	1.0\"/>
DEEP HOLE 47	5/26/22	PJL	1.0\"/>
DEEP HOLE 48	5/26/22	PJL	1.0\"/>
DEEP HOLE 49	5/26/22	PJL	1.0\"/>
DEEP HOLE 50	5/26/22	PJL	1.0\"/>
DEEP HOLE 51	5/26/22	PJL	1.0\"/>
DEEP HOLE 52	5/26/22	PJL	1.0\"/>
DEEP HOLE 53	5/26/22	PJL	1.0\"/>
DEEP HOLE 54	5/26/22	PJL	1.0\"/>
DEEP HOLE 55	5/26/22	PJL	1.0\"/>
DEEP HOLE 56	5/26/22	PJL	1.0\"/>
DEEP HOLE 57	5/26/22	PJL	1.0\"/>
DEEP HOLE 58	5/26/22	PJL	1.0\"/>
DEEP HOLE 59	5/26/22	PJL	1.0\"/>
DEEP HOLE 60	5/26/22	PJL	1.0\"/>
DEEP HOLE 61	5/26/22	PJL	1.0\"/>
DEEP HOLE 62	5/26/22	PJL	1.0\"/>
DEEP HOLE 63	5/26/22	PJL	1.0\"/>
DEEP HOLE 64	5/26/22	PJL	1.0\"/>
DEEP HOLE 65	5/26/22	PJL	1.0\"/>
DEEP HOLE 66	5/26/22	PJL	1.0\"/>
DEEP HOLE 67	5/26/22	PJL	1.0\"/>
DEEP HOLE 68	5/26/22	PJL	1.0\"/>
DEEP HOLE 69	5/26/22	PJL	1.0\"/>
DEEP HOLE 70	5/26/22	PJL	1.0\"/>
DEEP HOLE 71	5/26/22	PJL	1.0\"/>
DEEP HOLE 72	5/26/22	PJL	1.0\"/>
DEEP HOLE 73	5/26/22	PJL	1.0\"/>
DEEP HOLE 74	5/26/22	PJL	1.0\"/>
DEEP HOLE 75	5/26/22	PJL	1.0\"/>
DEEP HOLE 76	5/26/22	PJL	1.0\"/>
DEEP HOLE 77	5/26/22	PJL	1.0\"/>
DEEP HOLE 78	5/26/22	PJL	1.0\"/>
DEEP HOLE 79	5/26/22	PJL	1.0\"/>
DEEP HOLE 80	5/26/22	PJL	1.0\"/>
DEEP HOLE 81	5/26/22	PJL	1.0\"/>
DEEP HOLE 82	5/26/22	PJL	1.0\"/>
DEEP HOLE 83	5/26/22	PJL	1.0\"/>
DEEP HOLE 84	5/26/22	PJL	1.0\"/>
DEEP HOLE 85	5/26/22	PJL	1.0\"/>
DEEP HOLE 86	5/26/22	PJL	1.0\"/>
DEEP HOLE 87	5/26/22	PJL	1.0\"/>
DEEP HOLE 88	5/26/22	PJL	1.0\"/>
DEEP HOLE 89	5/26/22	PJL	1.0\"/>
DEEP HOLE 90	5/26/22	PJL	1.0\"/>
DEEP HOLE 91	5/26/22	PJL	1.0\"/>
DEEP HOLE 92	5/26/22	PJL	1.0\"/>
DEEP HOLE 93	5/26/22	PJL	1.0\"/>
DEEP HOLE 94	5/26/22	PJL	1.0\"/>
DEEP HOLE 95	5/26/22	PJL	1.0\"/>
DEEP HOLE 96	5/26/22	PJL	1.0\"/>
DEEP HOLE 97	5/26/22	PJL	1.0\"/>
DEEP HOLE 98	5/26/22	PJL	1.0\"/>
DEEP HOLE 99	5/26/22	PJL	1.0\"/>
DEEP HOLE 100	5/26/22	PJL	1.0\"/>



PRELIMINARY

STORMWATER MANAGEMENT PLAN
 PREPARED FOR
JOE MIRRA-PYRAMID HOMES
 LOT 6, WILTON ROAD EAST
 RIDGEFIELD, CONNECTICUT

Scale: 1" = 30'
 Date: 06/02/22
 Project: 22-012
 File: 5060
 Aerial: 220625P
 Sheet: C2

Checked by: KET/ML
 Date: 06/02/22

CCG Environmental LLC
 100 Main Street, Suite 100
 Ridgefield, CT 06370-1501
 www.ccgenv.com

LIMITS OF 100 YEAR FLOOD BOUNDARY AS SHOWN ON MAP ENTITLED "FIRM - FLOOD INSURANCE RATE MAP, TOWN OF RIDGEFIELD, COMMUNITY PANEL #090013-009 B" AS PREPARED BY THE FEDERAL EMERGENCY MANAGEMENT AGENCY